



## ➤ Quick-Start Guide

# SERVISION SVMULTICLIENT APPLICATION



### Copyright

Copyright © 2015 SerVision Inc. All Rights Reserved.

## Introduction

In order to view video from SerVision's Video Gateways, you must use a client application: the *SVMultiClient* application for PCs, one of the SerVision clients for smartphones and tablets, or the *SVControlCenter* client, for large enterprises using the *SVControlCenter* system. This document provides a quick overview of setting up and using *SVMultiClient*. (For a complete description of *SVMultiClient*, including the display of live and recorded video, event monitoring, device activation, and other features, please refer to the *SVMultiClient User Guide*, which can be downloaded from the SerVision website (<http://www.servision.net>).

If you want to use a PC to view video from a Video Gateway, the PC must be connected to a network. Furthermore, if the Video Gateway is not connected to the same network as the PC, both networks must be able to communicate with one another. This is usually accomplished via the internet.

This document explains how you can use *SVMultiClient* to view live video from a SerVision Video Gateway. If you have access to a SerVision Video Gateway, you can get started by configuring *SVMultiClient* to connect to that Video Gateway and then you can play live video from it. SerVision also maintains a demo system, to which you can connect freely via the internet at any time, as explained under *Connecting to the Demo System* on page 5.

## Installing SVMultiClient

### ⇒ To install SVMultiClient on your PC:

1. Download the latest version of *SVMultiClient* setup program from the SerVision website (<http://www.servision.net>). The setup file is called **Setup-MultiClient-SV-x.x.x.x.exe**. (The software version number appears in place of "x.x.x.x".)
2. Double-click the downloaded setup file. The setup program starts.
3. Follow the on-screen instructions to install the application.

## Opening SVMultiClient

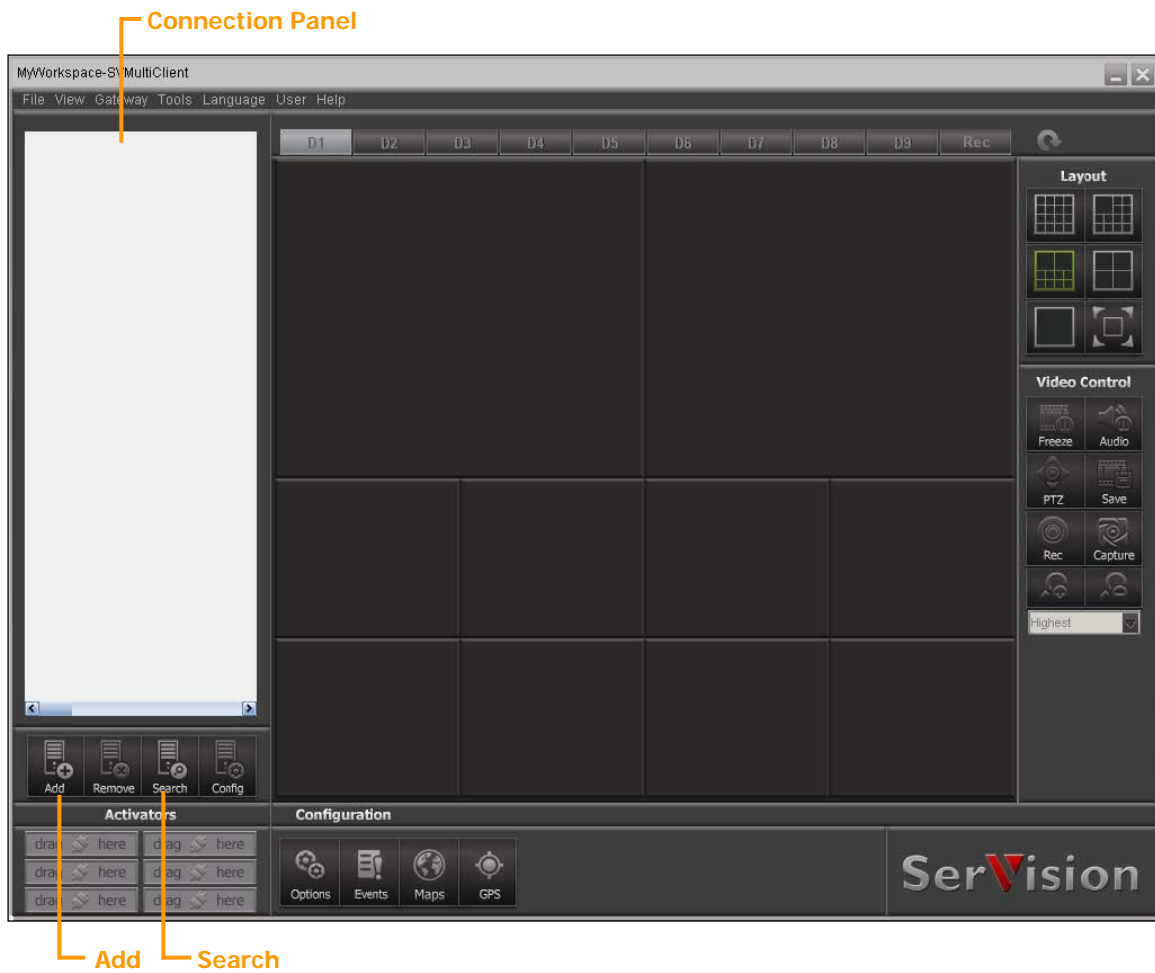
### ⇒ To open SVMultiClient:

- Double-click *SVMultiClient* icon on the PC's Desktop:



#### **SVMultiClient Desktop icon**

The *SVMultiClient* window opens:



SVMultiClient window

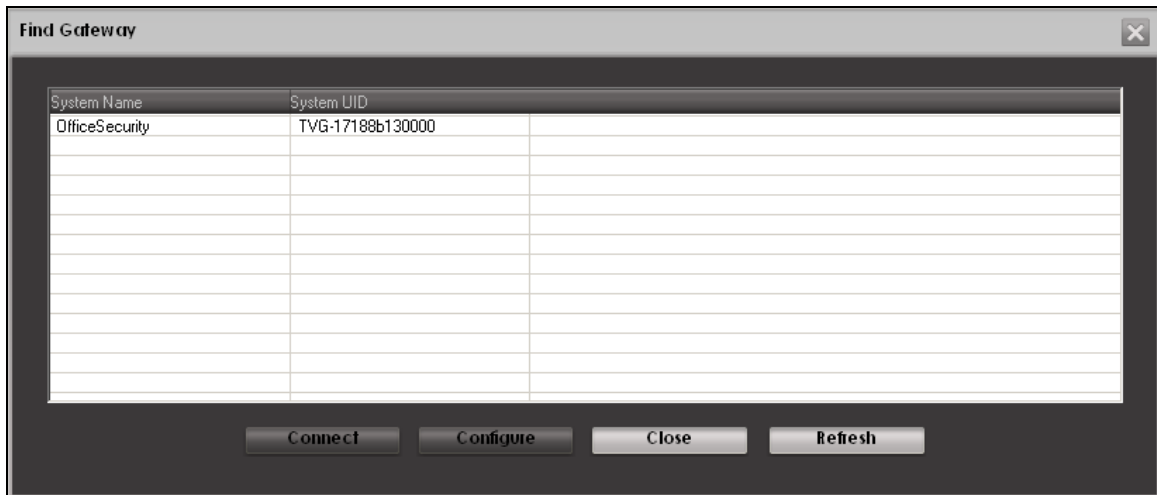
## Connecting to a Video Gateway

The method you must use to connect to a Video Gateway varies depending on whether the PC and the Video Gateway are on the same network or are connecting to one another remotely (e.g., through the internet).

⇒ **To connect to a Video Gateway that is on the same network as the PC:**

1. At the bottom of the **Connection Panel**, click the **Search** button.

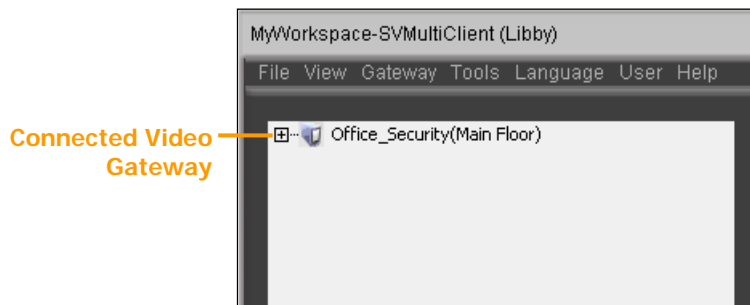
The **Find Gateway** dialog box opens, and displays a list of all the Video Gateways connected to the network:



**Find Gateway dialog box**

2. Select the Video Gateway and then click **Connect**.

SVMultiClient connects to the Video Gateway, and the name and description of the Video Gateway appears in the **Connection Panel** on the left side of the window:

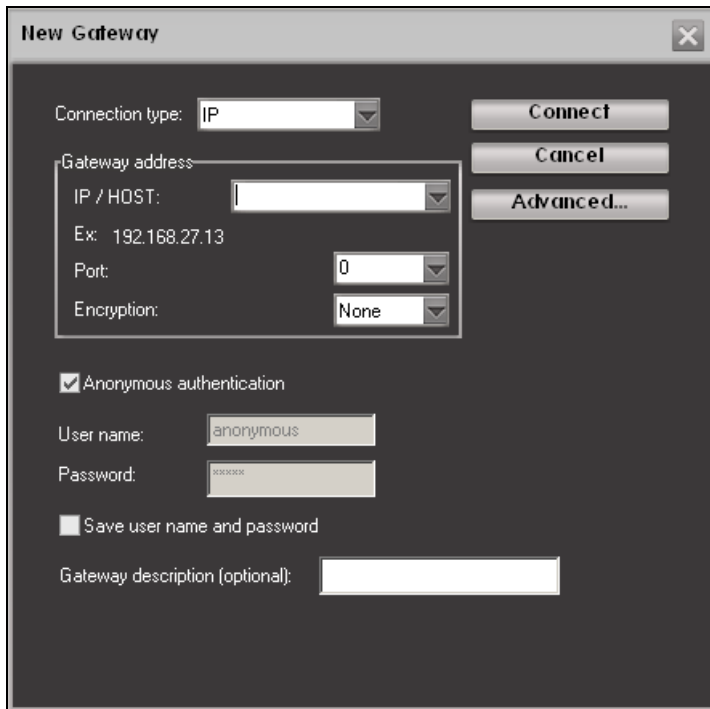


**Connected Video Gateway in the Connection Panel**

⇒ *To connect to a Video Gateway remotely:*

1. At the bottom of the **Connection Panel**, click the **Add** button.

The **New Gateway** dialog box opens:



**New Gateway dialog box**

2. Enter the IP address or internet hostname (URL), the port, and the username/password combination for the Video Gateway to which you want to connect. If you want to use an encrypted connection, select the type of encryption to use (if available).

**NOTE:** See *Connecting to the Demo System*, at the end of this document, for the connection information for the SerVision demo system.

3. Click **Connect**.

SVMultiClient connects to the Video Gateway. The name and description of the Video Gateway are displayed in the **Connection panel** on the left side of the main window (see figure above).

A successful connection is indicated by a (+) sign before the Video Gateway name in the **Connection panel**. If no (+) sign appears, this indicates that SVMultiClient has not yet succeeded in connecting to the Video Gateway, and there may be a connection problem.

You can connect to more than one Video Gateway simultaneously. To do so, repeat the steps above as necessary to add each Video Gateway. When SVMultiClient is connected to multiple Video Gateways, all of the Video Gateways are listed in the **Connection panel**:



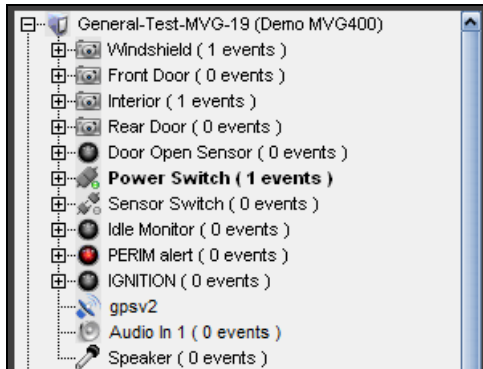
**Multiple Video Gateway connections**

## Viewing Video in SVMultiClient

Once SVMultiClient is connected to a Video Gateway, you can begin to view video from the Video Gateway.

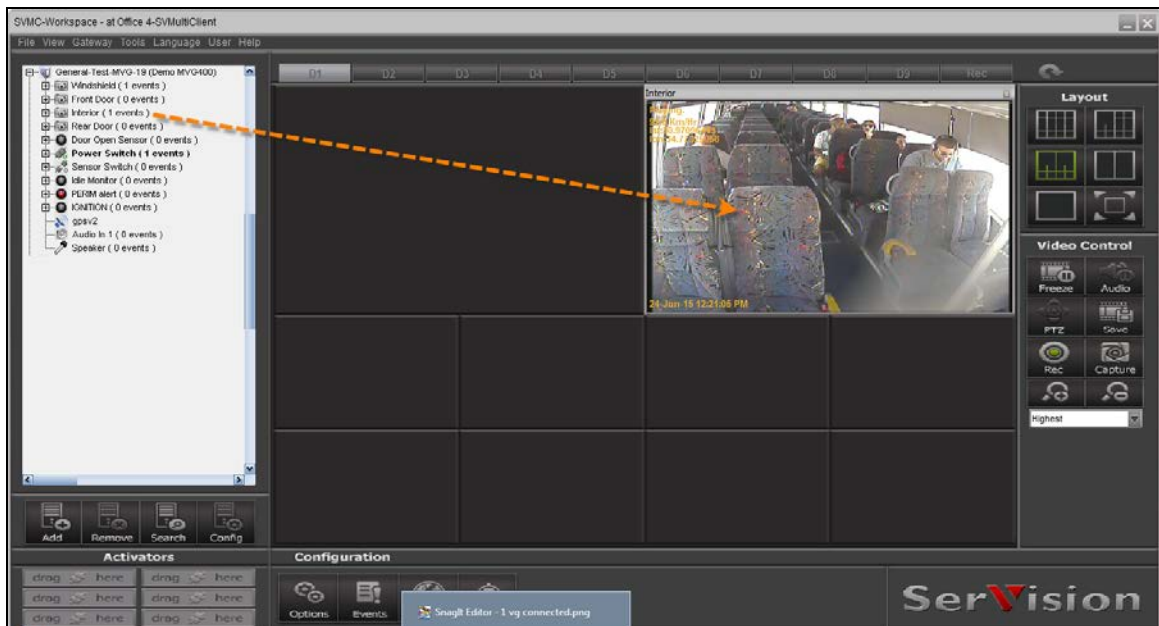
⇒ **To view video from a connected Video Gateway:**

1. Click the (+) sign beside the name of the Video Gateway. A list of cameras, sensors, and activators connected to the Video Gateway is displayed below its name:



**List of devices connected to a Video Gateway**

2. Drag a camera from the list to one of the SVMultiClient camera panes (squares) in the right panel of the SVMultiClient window. Live video from the camera is displayed in the pane.



**Video displayed in SVMultiClient**

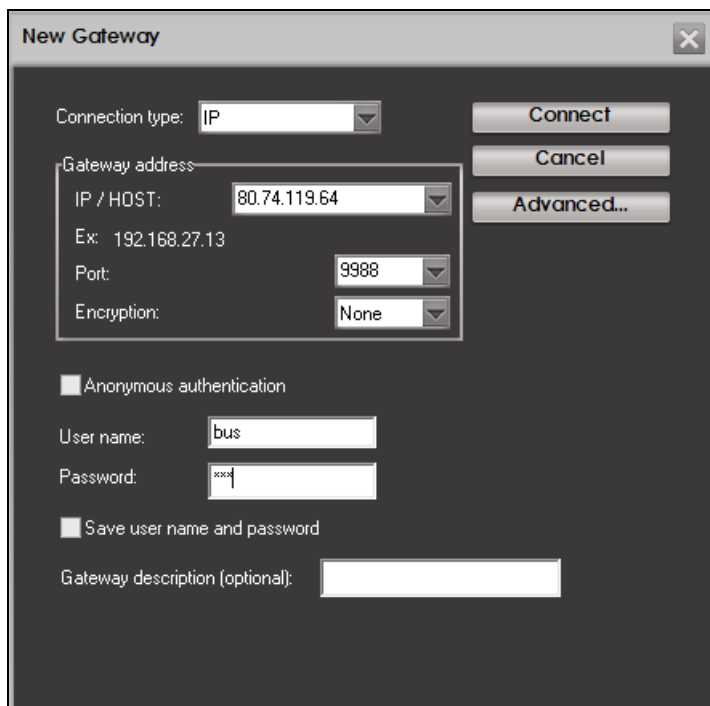
## Connecting to the Demo System

If you would like to see a demonstration of video display in SVMultiClient, follow the instructions below to add the SerVision demo system to your SVMultiClient. The video streams retrieved by this demo system are transmitted live from buses that operate in Israel. Note that these buses run primarily from Sunday morning through Friday afternoon, and most are not

active late at night. Thus, the best time to connect to them is on weekdays during daylight hours (Israel time – GMT +2).

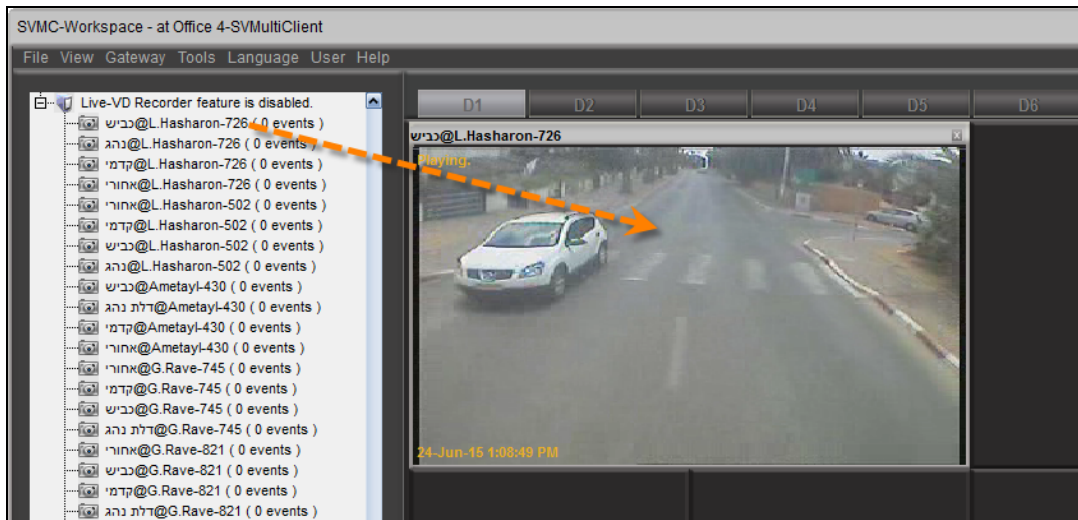
⇒ **To view video from the demo system:**

1. At the bottom of the **Connection Panel**, click the **Add** button. The **New Gateway** dialog box opens.
2. Enter the following settings:
  - **IP:** 80.74.119.64
  - **Port:** 9988
  - **Username:** bus
  - **Password:** bus



**New Gateway dialog box with the settings of the demo system**

3. Select **Save user name and password**.
4. Click **Connect**. SVMultiClient connects to the demo system, and it appears in the **Connection Panel**.
5. Click the (+) sign beside the name of the system to expand it.
6. Drag a camera from the expanded list to one of the camera panes. Live video from the camera plays in the pane.



Camera dragged to camera pane